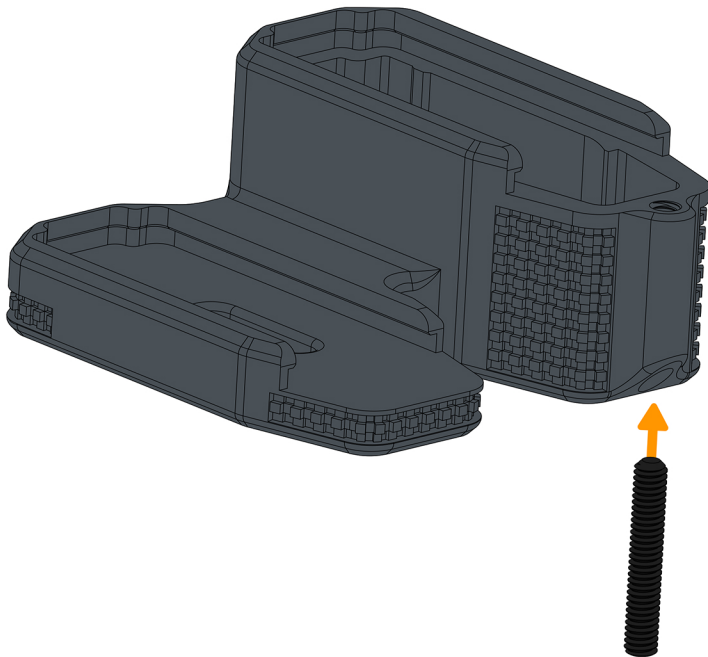


COVERT ASYMMETRIC BASEPAD INSTALLATION INSTRUCTIONS

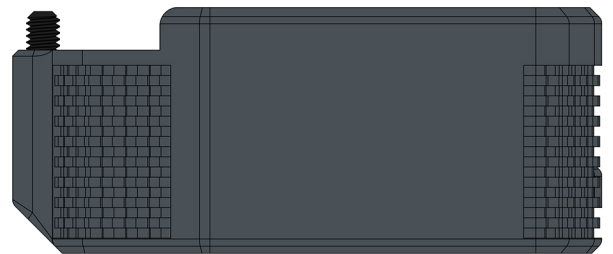
⚠️ ENSURE FIREARM IS UNLOADED AND SAFE

⚠️ WARNING: DAMAGE CAUSED BY OVER-TORQUED FASTENERS NOT COVERED BY WARRANTY.



1 THREAD THE SET SCREW INTO THE CAB USING THE INCLUDED $\frac{5}{64}$ " HEX KEY UNTIL FLUSH WITH LEDGE OF CAB. INSERT M3 PMAGS (WITH SPRING AND BASEPLATE) CONFIRM THEY FULLY SEAT AND ARE CLEAR OF THE SET SCREW PATH.

2 BEGIN THREADING SET SCREW AGAIN ENSURING THAT ITS FINAL POSITION IS JUST BELOW THE TOP SURFACE OF THE CAB, ABOUT $\frac{3}{16}$ " FROM LEDGE OF CAB AS SEEN BELOW. NOTE THAT MATERIAL AROUND THE SET SCREW MAY SLIGHTLY HEAT WHILE THREADING, ALLOW IT TO COOL PRIOR TO LOADING. THIS HEAT SET FRICTION SYSTEM PREVENTS THE SET SCREW FROM BACKING OUT.



3 PMAG BASEPLATE LOCATION ON PLUS ZERO SIDE WILL NOT MATCH THE PLUS FIVE SIDE. USE DASH MARKS TO CONFIRM PLUS ZERO SIDE IS FULLY SEATED, IF BASEPLATE MEETS UP WITH DASH MARKS IT IS FULLY SEATED. PMAG BASEPLATE CAN BE REMOVED FROM SPRING SYSTEM TO CONFIRM FIT PRIOR TO INSTALL.

